



SERVO DRILL PRESS HEAD PARTS LIST

(Models without work light)

Ordering instructions:

1. Serial number and model number must be specified on all parts orders.
2. Parts may be ordered as complete assembly or individually where listed.
3. For Quill Lock, Collet, and Metric Models, see following pages.

Item	Qty	Part #	Description
1	1	2770	Assembly - Power Cord
2	1	3886	Assembly - Hand Lever
3	1	1077	Assembly - Hand Lever Clamp Ring
4	1	1075	Shaft Hand Lever
5	1	00822	Knob
6	1	0349	Assembly - Field
7	1	1054	Assembly - Column Clamp
8	1	1057	Nut Column Clamp
9	1	05294	Knob, 4 Prong Black Phen.
10	1	1056	Sleeve Column Clamp
11	1	05295	1/4-20 x 3" Threaded Steel Stud
12	1	1155	Assembly - Armature
13	1	2794	Pulley
14	2	00553	Bearing
15	2	01745	6-32 x 3/16" Socket Set Screw
16	1	2798	Assembly - Cover
17	1	2808	Assembly - Worm Gear
18	1	2809	Assembly - Dial Bushing
19	1	1069-1	Assembly - Cross Shaft (inch)
20			No longer used.
21	1	1856	Assembly - Spindle Pulley
22	1	1849	Pulley Support Housing
23	1	2793	Spindle Pulley
24	2	3331	Washer Wave
25	1	01207	Retaining Ring
26	2	01938	Retaining Ring
27	1	05244	Bearing
28	1	05244	Bearing
29	1	2184-1	Assembly - Dial Indicator
30	1	2185-1	Assembly - Dial Indicator Rack
31	1	1061-1	Assembly - Down Stop
32	1	1874-1	Assembly - Quill Inch
33	2	1279	Bushing Rack
34	1	1280	Spring Rack
35	2	3331	Washer Wave
36	1	1879	Spindle
37	1	1067-2	Rack Quill
38	1	1847	Quill
39	2	05001	4-40 x 1/4 Phillips Pan Head Screw
40	2	04926	SS Flat Washer
41	2	01207	Retaining Ring
42	1	05244	Bearing
43	1	05244	Bearing
44	1	3414-1	Assembly - Circuit Board
45	2	05603	Stud - Field
46	1	1081	Gasket - Friction

Item	Qty	Part #	Description
47	1	1841	Clamp - Disc
48	1	1843	Drive - Ring
49	2	2977	Clip - Cover
50	1	3805	Motor - End Bell
51	1	57925	Clamp - Dial Indicator
52	1	1080-2	Dial - Cross Shaft
53	1	1858-1,-2	Housing - Drill Press
54	1	3762-1	Cover - Bottom
55	4	00811	2-56 x 3/16 Phillips Pan Head Screw
56			No longer used.
57	1	05060	8-32 x 5/16 Long Socket Set Screw w/ Nylon Patch
58	6	00796	6-32 x 3/8 Socket Head Cap Screw
59	1	05063	6-32 x 3/16 Half Dog Pt. Socket Set Screw
60	1	00507	10-32 x 3/16 Half Dog Pt. Socket Set Screw
61	4	01117	8-32 Hex Nut
62	2	00520	#8 Split Lockwasher
63	2	01118	#8 Lockwasher
64	2	00555	Washer - Wave
65	1	00751	Washer - Fiber
66	1	00790	Washer - Wave
67	1	00739	Retaining Ring
68	1	00821	Retaining Ring
69	1	01864	Heyco Clip
70	1	01291	Bushing
71	1	1310	Seal Felt
72	1	00899	Cap Plug
73	1	00952	Cap Plug
74	1	01292	O-Ring
75	2	02800	Drive Belt
76	1	01409	Knob Speed Control
77	1	00987	Power Switch
78	1	01149	Circuit Breaker 1.8A
79			No longer used.
80	2	00573	Brush Cap
81	2	5744	Brush Holder
82	2	01283	Brush
83	1	01859	4/40 x 1/2 Socket Head Cap Screw
84	3	02481	4-40 x 3/8 Socket Head Cap Screw
85	1	00944	Chuck Albrecht

QUILL LOCK (MILL HEAD)

86	1	3254	Shoe
87	1	2792	Quill Lock Bushing
88	1	01777	1/4-28 x 1/2 Socket Head Cap Screw
89	1	01481	Shear Lock Thumb Screw

COLLET

90	1	1836-1	Assembly - Quill (Inch)
91	1	4829	Assembly - Spindle Collet with Groove Pin
92	1	57659	Draw Bar
93	1	57272	Knob - Draw Bar
94	1	57861	Screw - Draw Bar
95	1	05667	Washer - Conical

METRIC

Item	Qty	Part #	Description
96	1	1069-2	Assembly - Cross Shaft
97	1	2184-2	Assembly - Dial Indicator
98	1	2185-2	Assembly - Dial Indicator Rack
99	1	1061-2	Assembly - Down Stop
100	1	1874-2	Assembly - Quill
101	1	1067-3	Rack Quill
102	1	1080-3	Dial Cross Shaft

ITEMS OUT OF SEQUENCE DUE TO CHANGES

103	1	57997	Seal, Slinger, Chuck
104	2	01745	6-32 x 3/16 Lg Socket Set Screw
105	1	05586	6-32 x 3/8 Nylon Filister Head Screw
106	1	57629	Seal, Slinger, Collet
107	1	1844	Spindle, Collet
108	3	00803	Washer, shim

DRILL PRESS HEAD MODELS

Model	Description
M-7400	ALBRECHT CHUCK SPINDLE, INCH VERISON
M-7401	WW COLLET SPINDLE, INCH VERSION
M-7402	ALBRECHT CHUCK SPINDLE, NO DIAL INDICATOR
M-7403	ALBRECHT CHUCK SPINDLE, METRIC VERSION
M-7404	WW COLLET SPINDLE, METRIC VERSION

MILLING/DRILLING HEAD MODELS (include quill lock)

M-7405	WW COLLET SPINDLE, INCH VERSION
M-7406	WW COLLET SPINDLE, METRIC VERSION

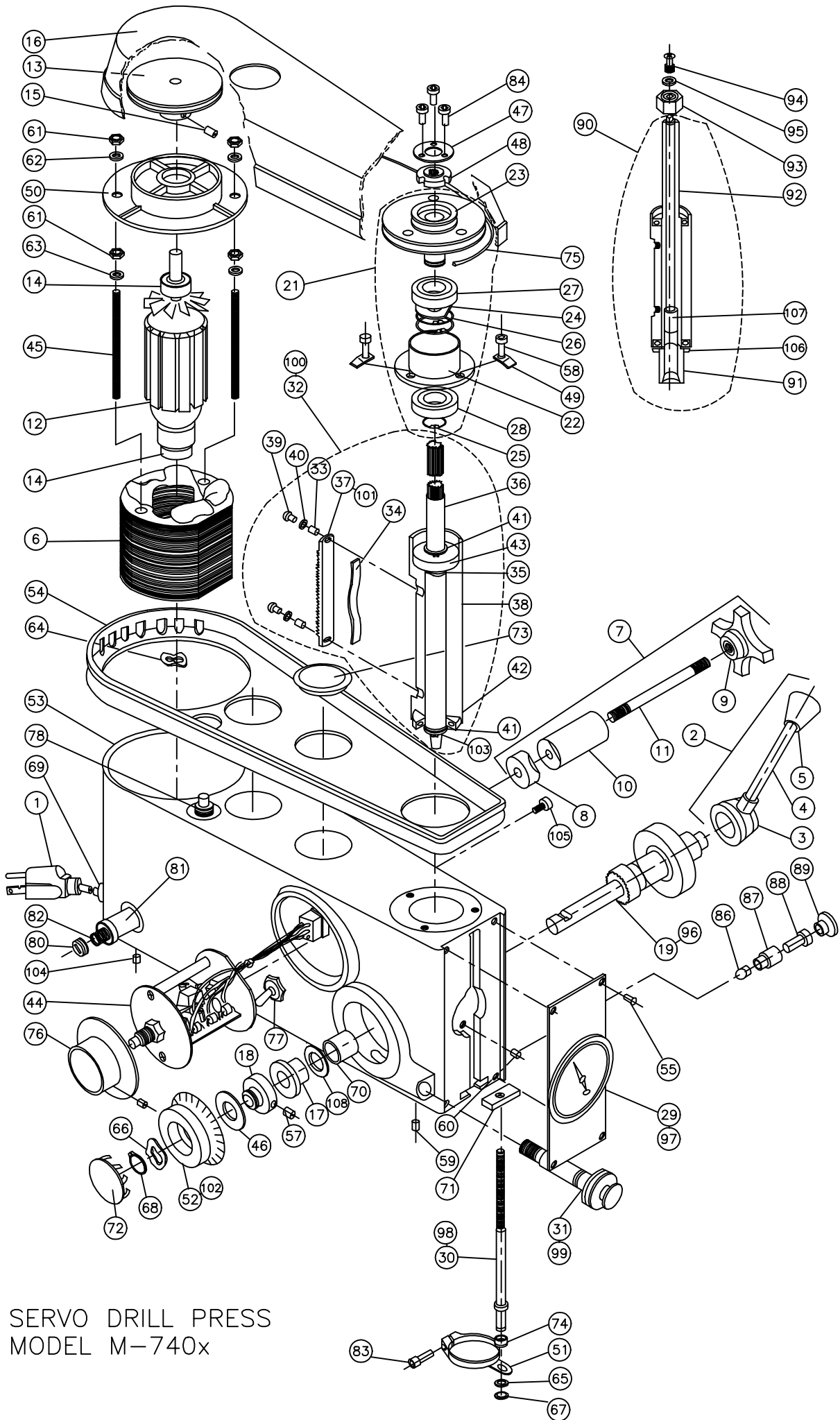
TOOLING

00944	ALBRECHT KEYLESS CHUCK (.012" TO .126" CAPACITY #30J0) (requires 01841 arbor when used with WW collet models)
01276	ALBRECHT KEYLESS CHUCK (.008" TO .065" CAPACITY #15J0) (requires 01841 arbor when used with WW collet models)
01275	JACOBS KEY CHUCK (0 TO 5/32 CAPACITY #0) (requires 01841 arbor when used with WW collet models)
01841	WW ARBOR TO JACOBS "0" TAPER
01250	TRANSFORMER (transform 220 volts to the required 115 volts)
various	WW COLLETS (89 sizes available from .0039"/.1 mm to .252"/6.4 mm))

CONTACT YOUR SERVO DEALER OR SERVO PRODUCTS COMPANY FOR COMPLETE PRICING, ACCESSORIES, AND OPTIONS.

SERVO PRODUCTS COMPANY

34940 Lakeland Blvd., Eastlake, OH 44095 USA
Phone: 800.521.7359 or 440.942.9999 Fax: 440.942.9100
Web: www.servoproductsco.com
Call for the location of our regional Service Centers.



SERVO DRILL PRESS
MODEL M-740x