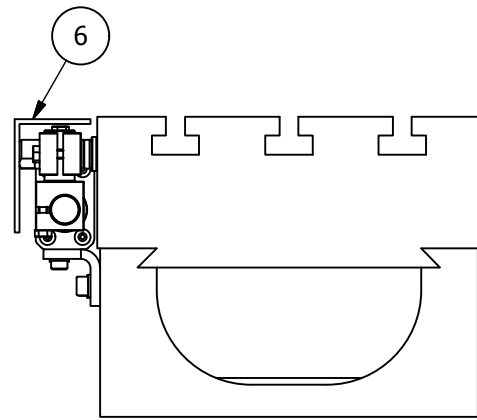
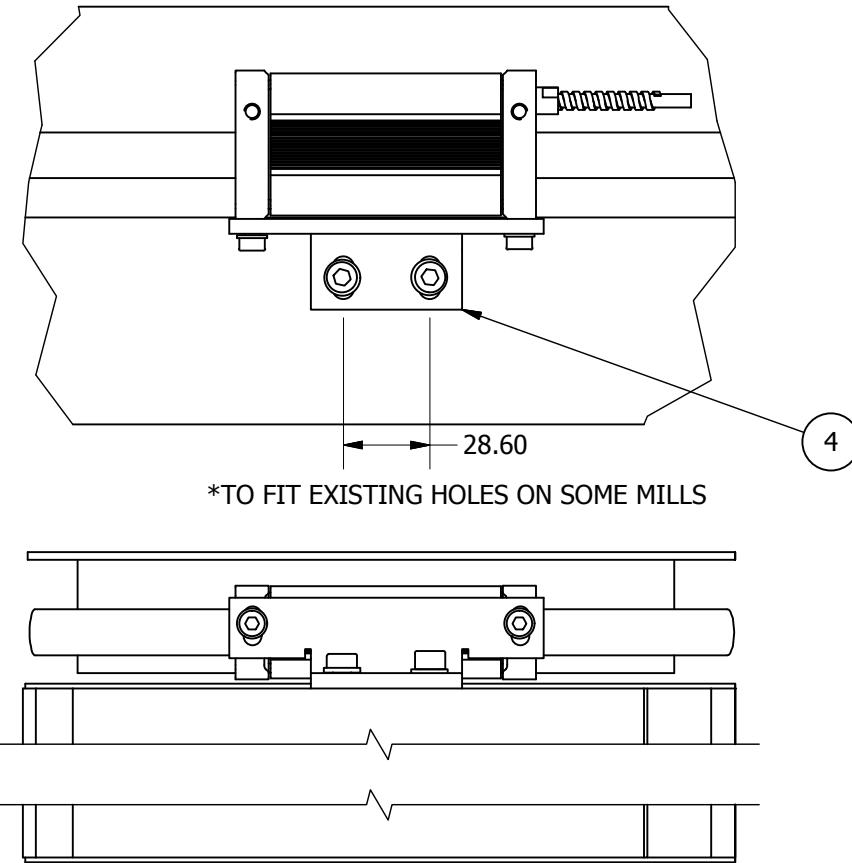
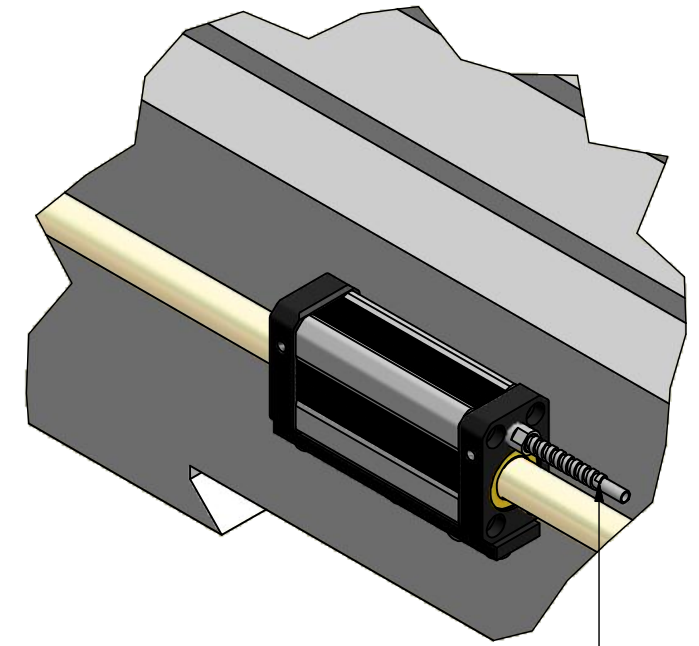
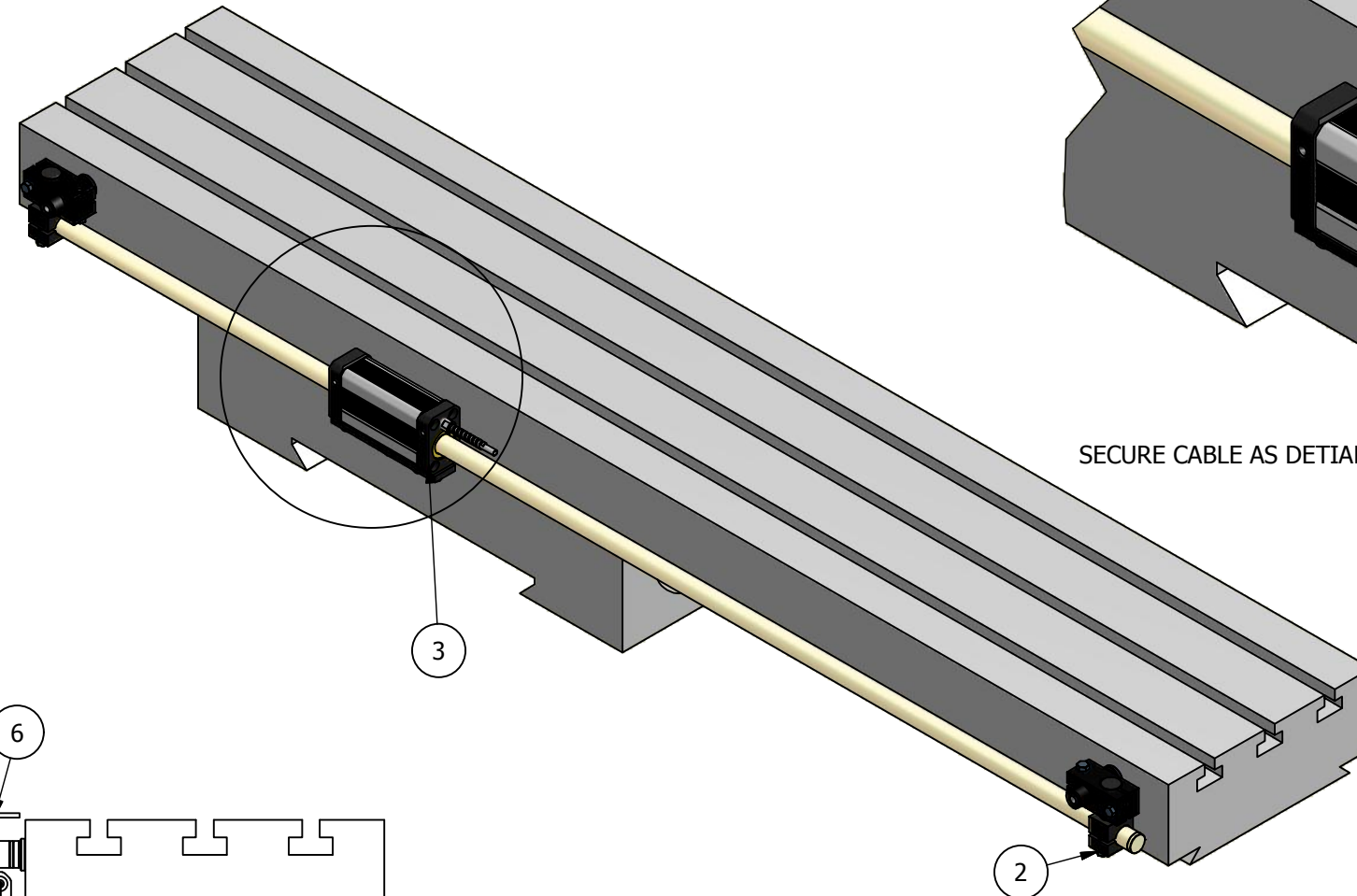


**X AXIS FITTING OPTION A**

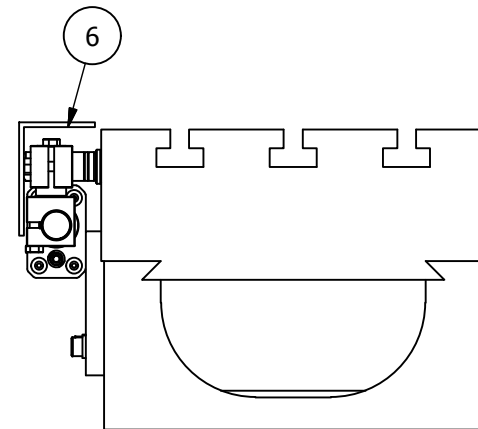
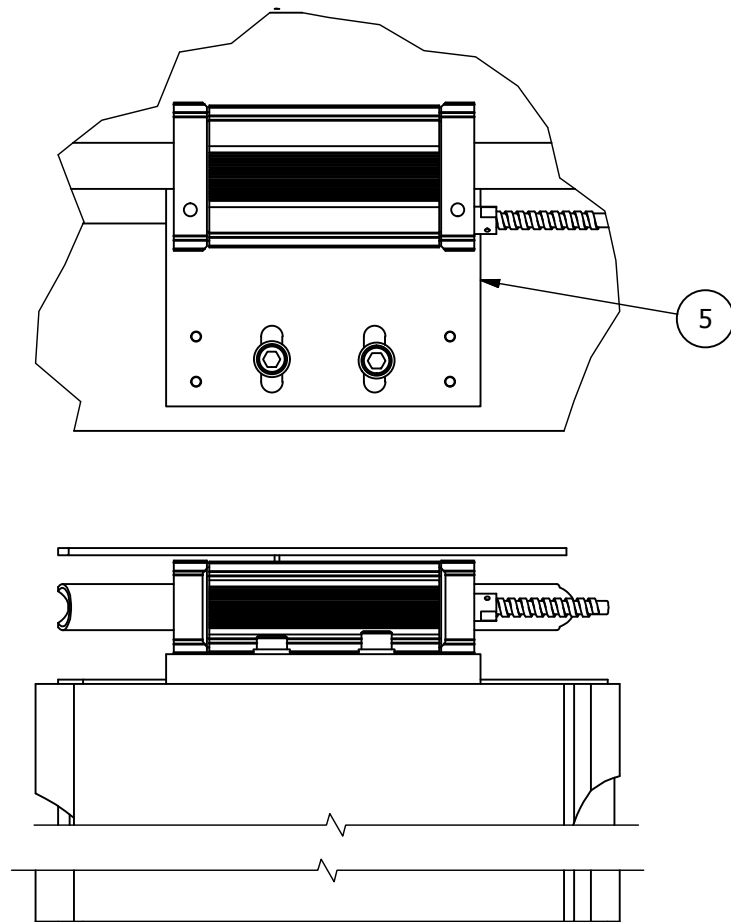


**PART NO: (MBK010)**

2 AXIS KNEE/TURRET MILL BRACKET KIT  
 FITS 2 SPHEORSYN "300" OR "SERIAL" ENCODERS  
 USE IN CONJUNCTION WITH ENCODER INSTALL GUIDE 023-82510



**X AXIS FITTING OPTION B**

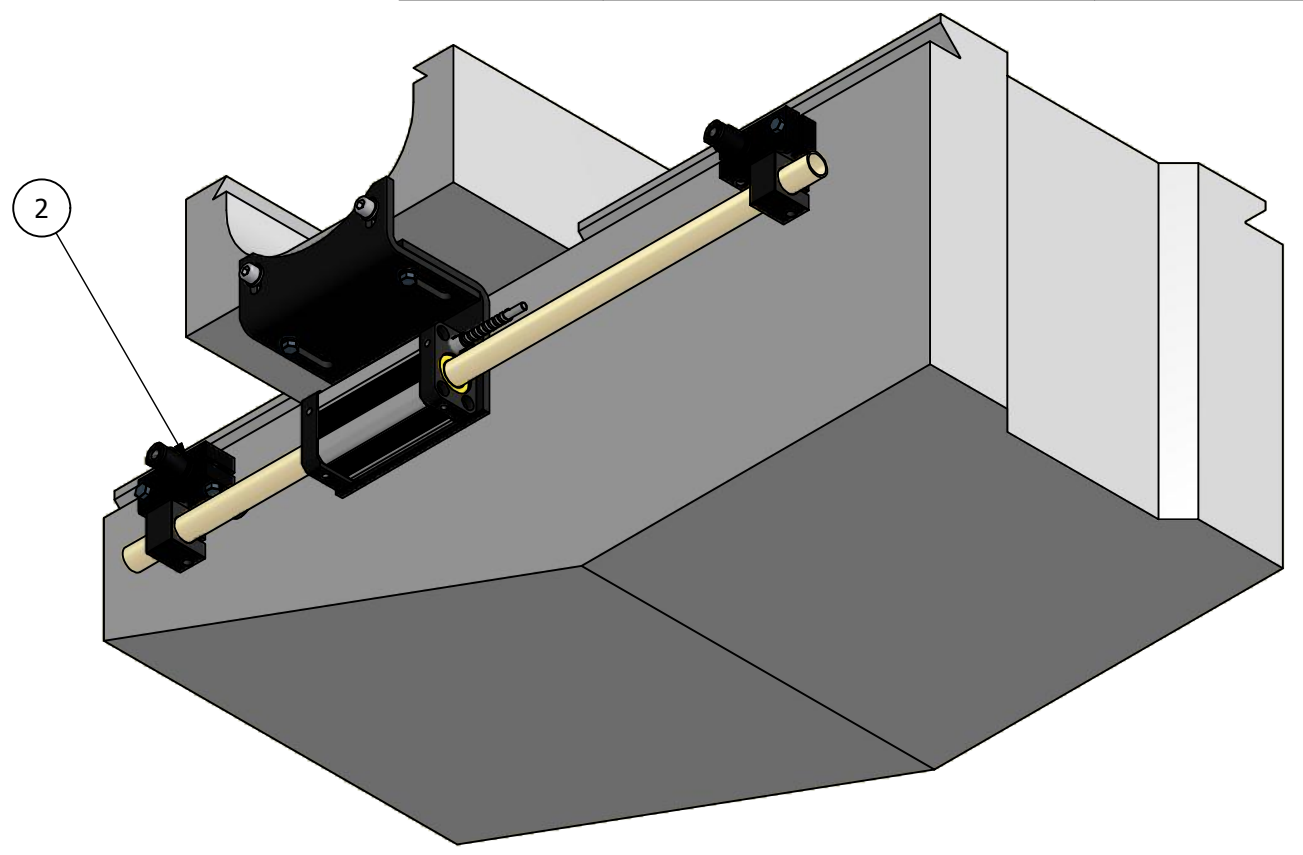
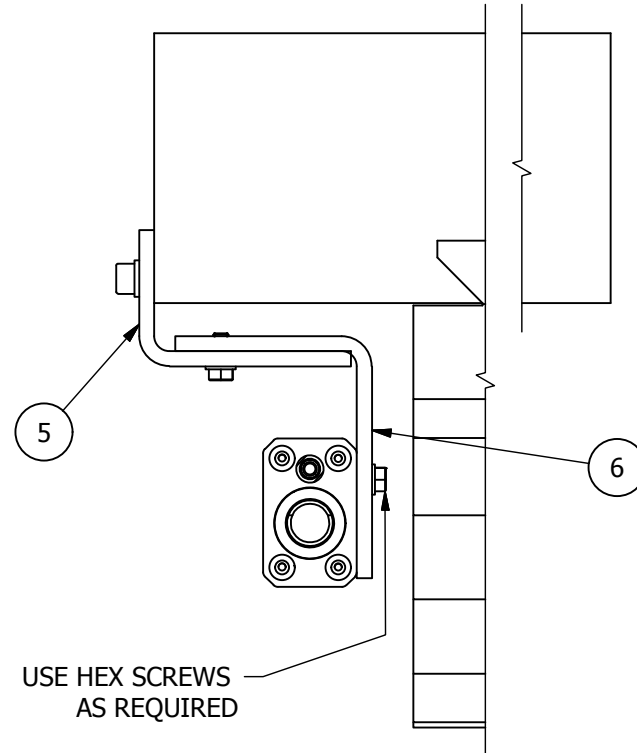
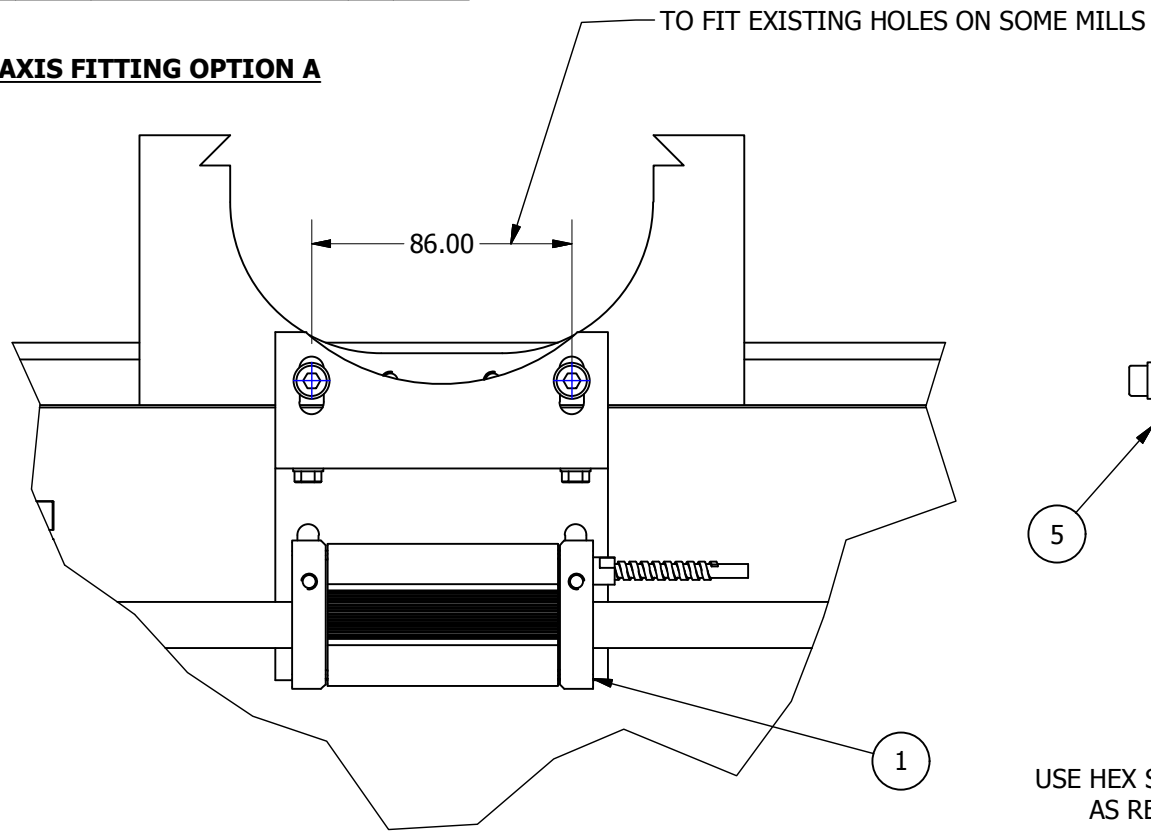


NOTE: OVER 2.5MT TRAVEL SPECIAL BRACKETS AND SCALE SUPPORTS ARE SUPPLIED AS NEEDED.

Parts List			
ITEM	QTY	PART NUMBER	DESCRIPTION
1	1	"SLT***" or "SS***"	SPHEROSYN SCALE AS ORDERED
2	1	600-66810M/EP-2722	SCALE MOUNTING KIT AS ORDERED
3	1	"S300***"/"SSE***"	SPEROSYN 300 OR SERIAL ENCODER AS ORDERED
4	1	295-00920	X AXIS MILL BRACKET A
5	1	295-00990	X AXIS MILL BRACKET B
6	1	***	GAURD INCLUDED WITH SCALE

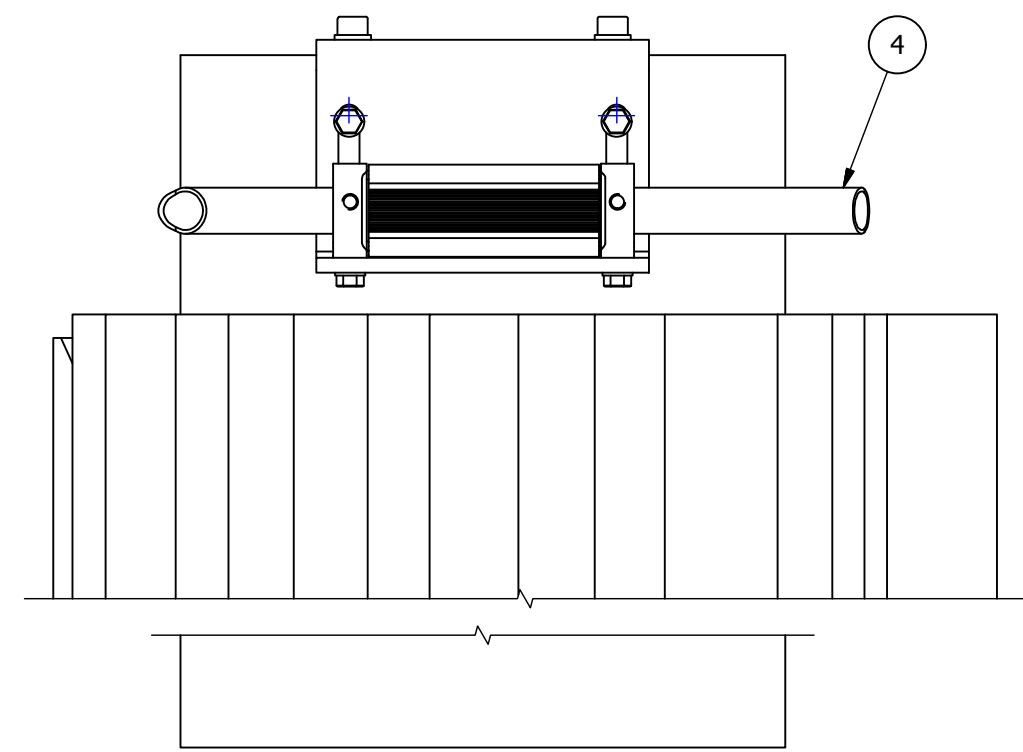
REV. ISS.	DATE	C.N.No	ALTERATION	TITLE MBK010 - BRACKET KIT	MATERIAL/FINISH SEE ABOVE	SCALE N.T.S	UNLESS OTHERWISE STATED: - TOLERANCES: - 0 DECIMAL PLACES ± 0.5 1 DECIMAL PLACES ± 0.2 2 DECIMAL PLACES ± 0.1 ANGULAR ± 1'
				DRAWN Chris.Wh DATE 19/09/2017	Leicester	SHEET 1 OF 3	DIMENSIONS ARE IN M.M
						THIS DRAWING IS THE PROPERTY OF NEWALL MEASUREMENT SYSTEMS LTD. THE INFORMATION THEREON MAY NOT BE COPIED OR USED WITHOUT WRITTEN PERMISSION.	
						DRAWING NUMBER	023-82382
						REV. ISS.	0

**Y AXIS FITTING OPTION A**

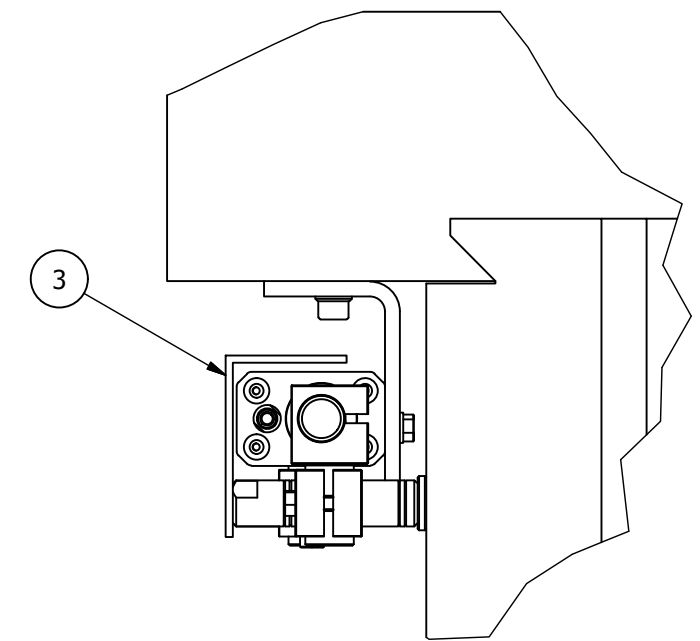
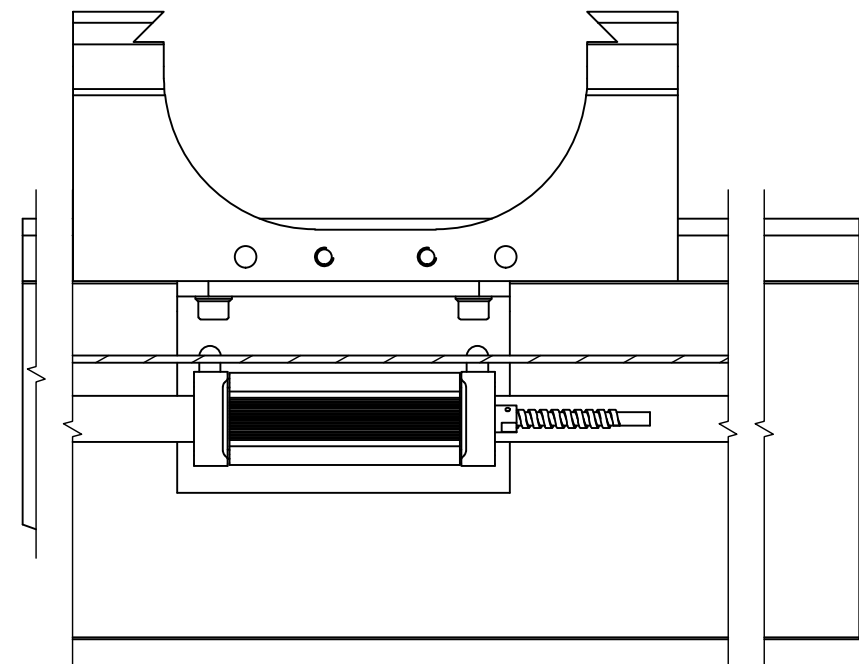


NOTE: OVER 2.5MT TRAVEL SPECIAL BRACKETS AND SCALE SUPPORTS ARE SUPPLIED AS NEEDED.

Parts List			
ITEM	QTY	PART NUMBER	DESCRIPTION
1	1	"S300****SE****	S300 OR SERIAL ENCODER (AS ORDERED)
2	1	600-66810M/EP-2722	SCALE BRACKETS (AS ORDERED)
3	1	***	GAURD INCLUDED WITH SCALE
4	1	SS*** OR SLT***	SCALE (AS ORDERED)
5	1	295-00921	MILLING M/C Y AXIS BRACKET A
6	1	295-00923	MILLING M/C Y AXIS BRACKET B



**Y AXIS FITTING OPTION B**

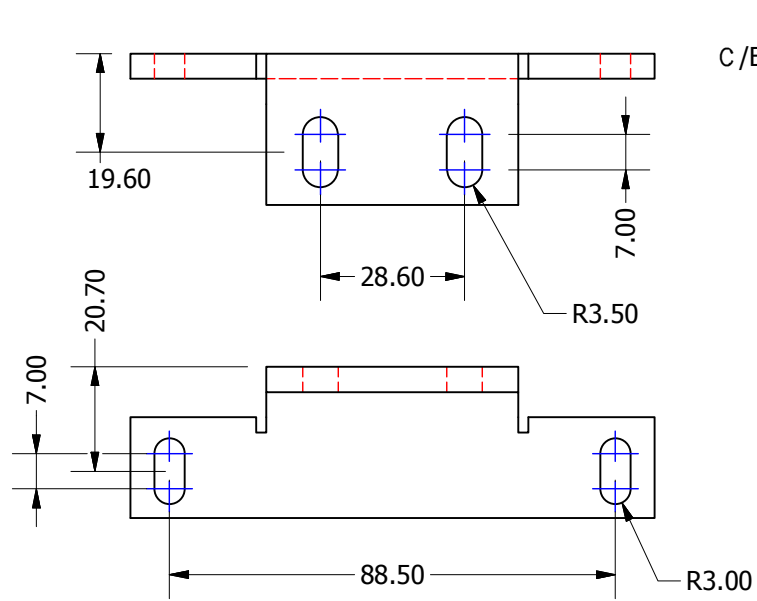


REV. ISS.	DATE	C.N.No	ALTERATION	TITLE MBK010 - BRACKET KIT	MATERIAL/FINISH SEE ABOVE	SCALE N.T.S	UNLESS OTHERWISE STATED: - TOLERANCES: - 0 DECIMAL PLACES ± 0.5 1 DECIMAL PLACES ± 0.2 2 DECIMAL PLACES ± 0.1 ANGULAR ± 1'
				DRAWN Chris.Wh DATE 19/09/2017	Leicester	SHEET 2 OF 3	DIMENSIONS ARE IN M.M
				NEWALL England		DRAWING NUMBER 023-82382	REV. ISS. 0

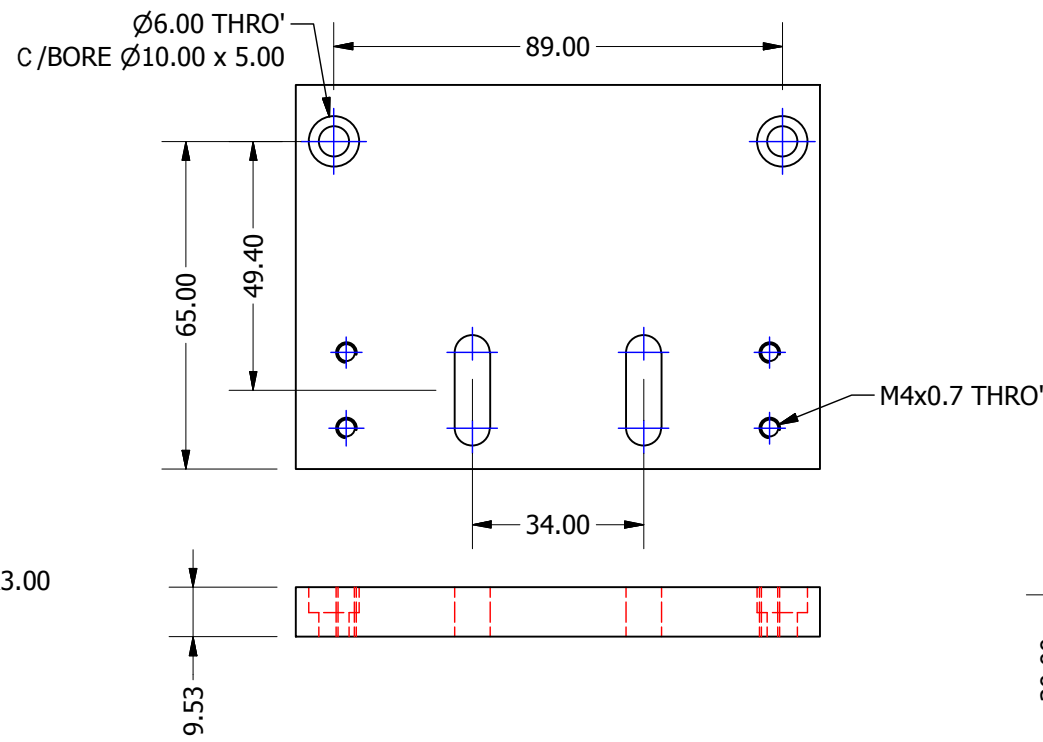
THIS DRAWING IS THE PROPERTY OF NEWALL MEASUREMENT SYSTEMS LTD. THE INFORMATION THEREON MAY NOT BE COPIED OR USED WITHOUT WRITTEN PERMISSION

# KIT CONTENTS FOR: MBK010

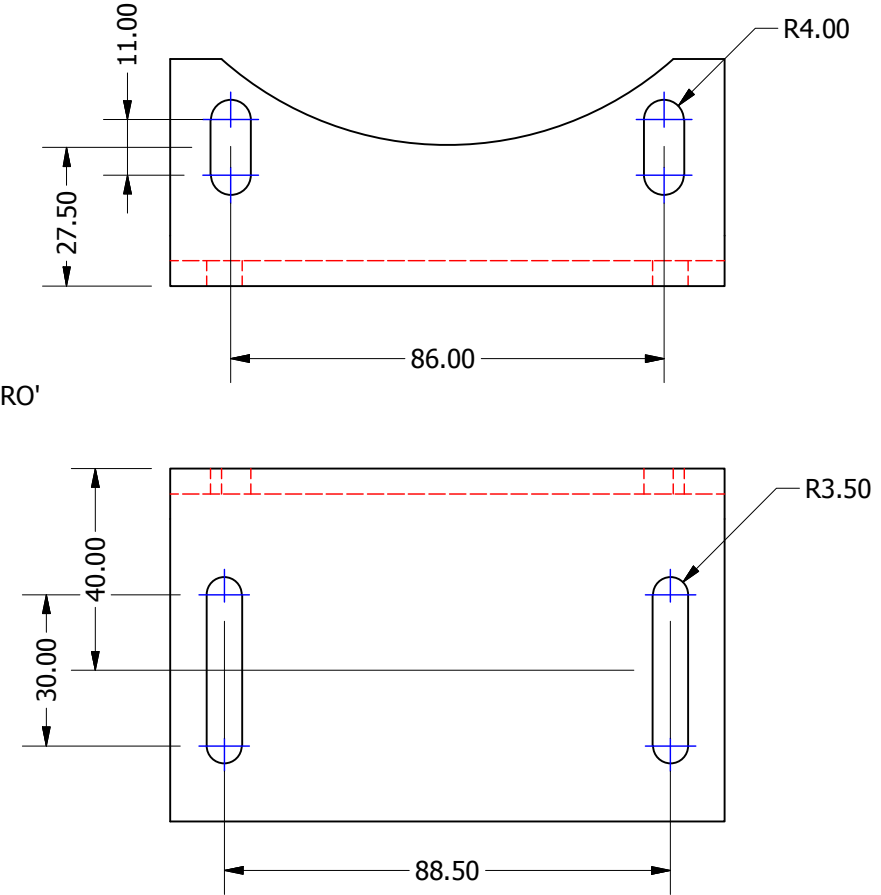
**(QTY 1) 295-00920 X AXIS ANGLE**



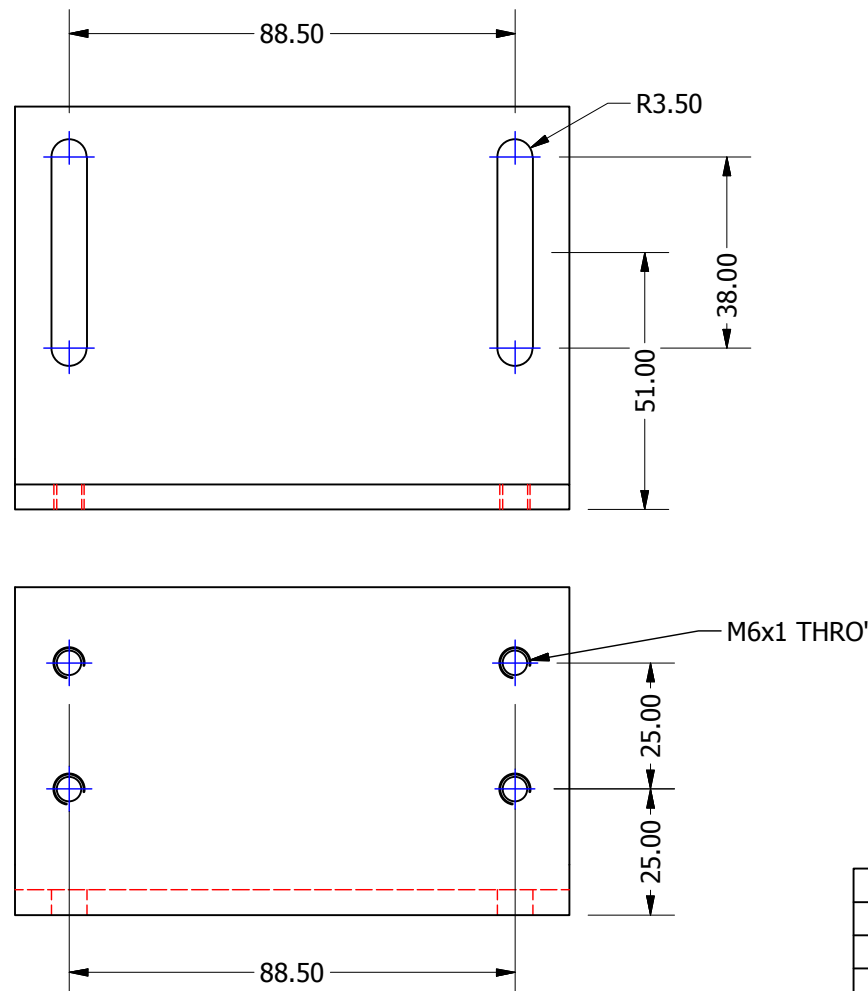
**(QTY 1) 295-00990 PLATE BRACKET**



**(QTY 1) 295-00921 Y AXIS ANGLE A**



**(QTY 1) 295-00923 Y AXIS ANGLE B**



BOM		
Pt Number	Description	Qty
295-00920	MILLING MACHINE X AXIS BRACKET A 295-00920/0	1
295-00990	S300 PLATE BRACKET A 295-00990/0	1
295-00921	MILLING MACHINE Y AXIS BRACKET A 295-00921/0	1
295-00923	MILLING MACHINE Y AXIS BRACKET B 295-00923/0	1
	M6x20 SOC CAP HD SCREW	6
	M6x10 HEX CAP HD SCREW	2
	M6 FLAT WASHER	8
	M5x10 HEX HD SCREW	2
	M5x10 SOC CAP HD SCREW	4
	M5 FLAT WASHER	4
	M4 x 12 GRUB SCREWS	4
	M4 x 12 TAPTITE SCREWS	8
	CABLE TIES	10
	P CLIP NYLON N4-B	4
	P CLIP METAL AL-4	4
023-82382	MBK010 BRACKET KIT DATA SHEET	1

REV. ISS.	DATE	C.N.No	ALTERATION	TITLE MBK010 - BRACKET KIT	MATERIAL/FINISH SEE ABOVE	SCALE N.T.S.	UNLESS OTHERWISE STATED: - TOLERANCES: - 0 DECIMAL PLACES ± 0.5 1 DECIMAL PLACES ± 0.2 2 DECIMAL PLACES ± 0.1 ANGULAR ± 1'
				DRAWN Chris.Wh	NEWALL Leicester England	SHEET 3 OF 3	DIMENSIONS ARE IN M.M
				DATE 19/09/2017		DRAWING NUMBER 023-82382	REV. ISS. 0